

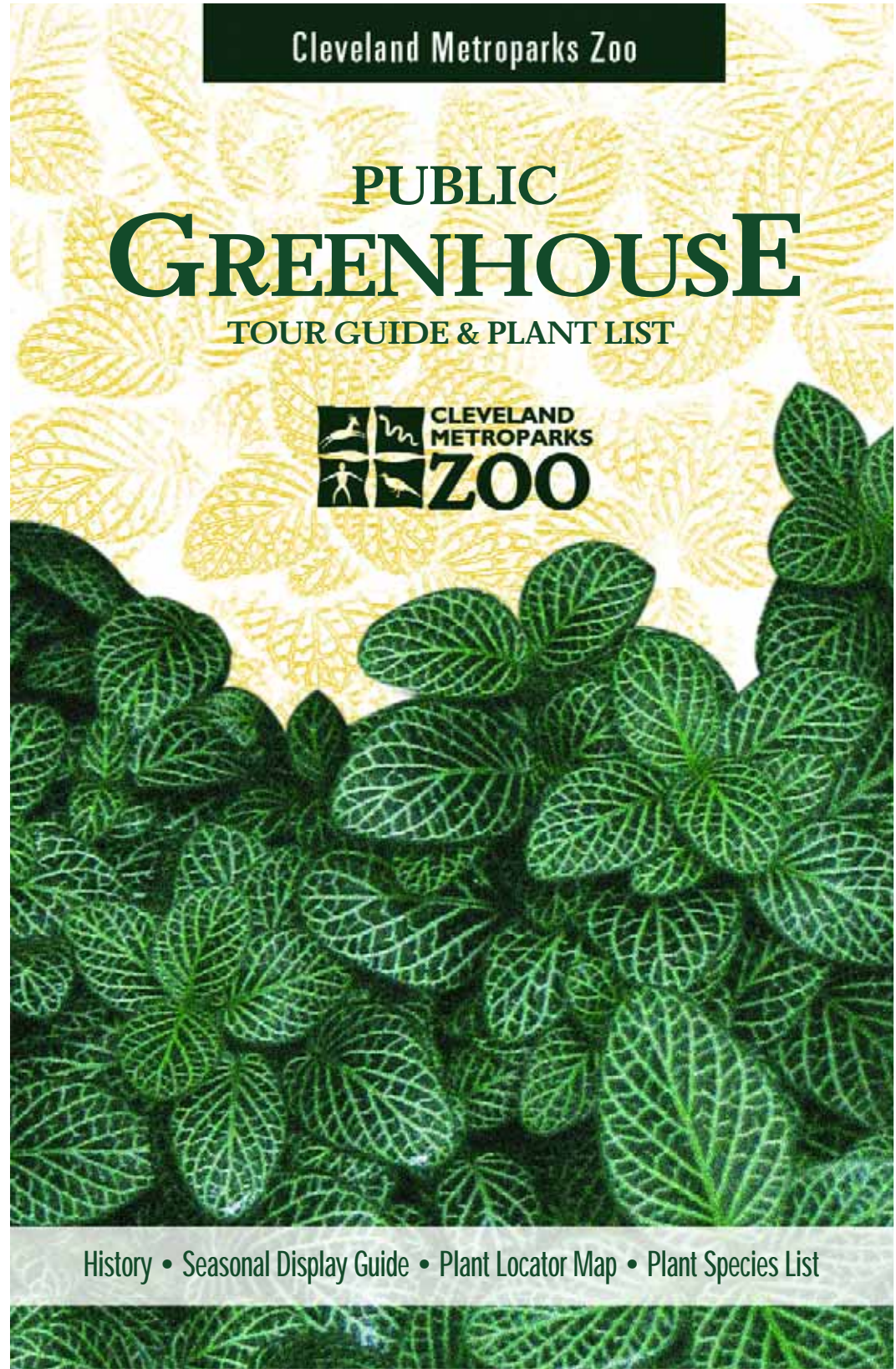


3900 Wildlife Way
Cleveland, Ohio 44109

Phone: 216/661-6500
Fax: 216/661-3312
Web: clemet zoo.com

Brochure design by McHale & Koepke Communications • www.mchalekoepke.com

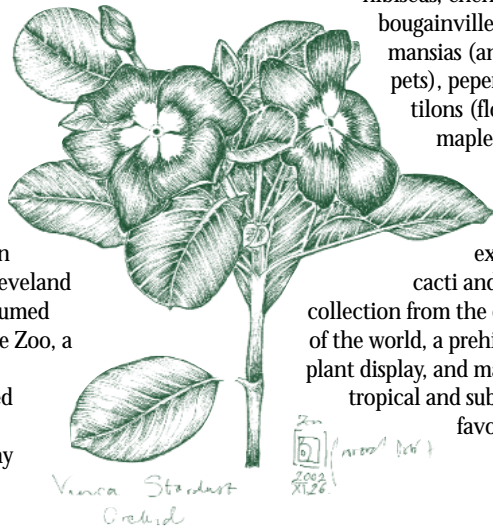
©2004 Cleveland Metroparks Zoo



Overview

History

In the early 1950s, visitors to Cleveland Metroparks Zoo admired the gardens surrounding the working greenhouse and peered in the windows, hoping to see an exotic plant in bloom. They could never get up close because the building was not open to the public. In 1975, when Cleveland Metroparks assumed operation of the Zoo, a survey of Zoo patrons revealed that visitors wanted a display greenhouse. In 1981, a design team developed plans for a public greenhouse. One design called for an orangerie that attached a new public greenhouse to the existing working greenhouse. However, this design obstructed the view of Monkey Island from Wade Hall. As a result, the Zoo selected a design with two structures separated by a central courtyard. Construction began in the spring of 1982 and on April 3, 1983 the Public Greenhouse opened its doors. Since then, Zoo visitors can view exotic plants from all over the world along with beautiful seasonal displays. We hope you enjoy your visit and come back often to see what is blooming.



*Vanilla Stoddard
Orchid*

Permanent Displays

The Public Greenhouse is located in the center of the Zoo, directly across from historic Wade Hall. Plants on display year-round include: ficus trees, hibiscus, chenille plants, bougainvilleas, brugmansias (angel trumpets), peperomias, abutilons (flowering maples), and begonias. There is also an extensive cacti and succulent collection from the deserts of the world, a prehistoric plant display, and many other tropical and sub-tropical favorites.

Seasonal Displays

Pre-Spring and Spring Pizzazz: February through April

If you are looking for a tropical oasis or wish to experience the sights and scents of spring during Cleveland's long, cold winters, look no further than the Zoo's Public Greenhouse. The Zoo welcomes an early spring with daffodils, tulips, hyacinths, crocus, hydrangeas, azaleas, and other favorites all forced for your delight well before the rest of Cleveland thaws. Other plants in bloom include: cyclamen, thunbergias, amaryllis, orchids, bromeliads, calliandras, and eranthemums.

Butterfly Magic:

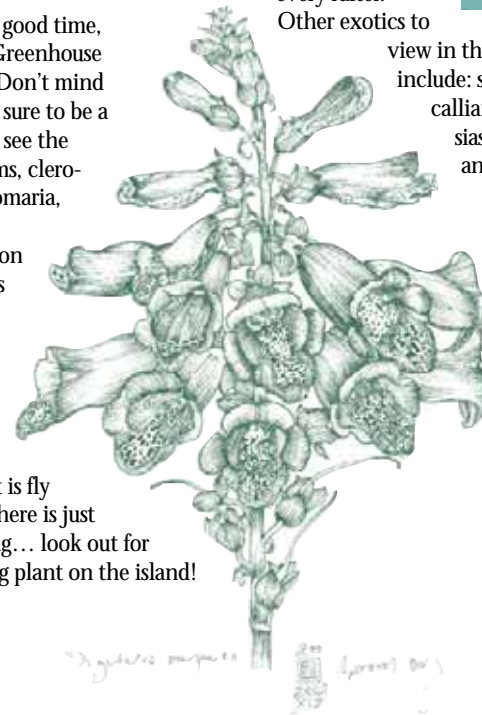
Summer

Experience a dazzling show of moving color as hundreds of tropical butterflies, representing 35-40 different species, fly among a flowering paradise. Observe butterflies feeding on various nectar plants including: lantana, hibiscus, jatropha, ixora, pentas, hamelia, and stachytarpheta. In addition, look for clerodendrons, pachystachys, justicias, plumbago, hoyas, allamandas, plus many other flowering plants.

Haunted Greenhouse:

October

For a ghoulish good time, experience a Greenhouse like no other. Don't mind the tricks – it's sure to be a treat once you see the chysanthemums, clerodendrons, tecomaria, tillandsia and dichorisandra on display. What's that smell? It's coming from the flowers on the giant starfish plant (a carrion plant that is fly pollinated). There is just one other thing... look out for the man-eating plant on the island!



Dichorisandra purpurea

Holiday Displays:

Winter

An eye-catching delight, the display of lights and flowers in the greenhouse makes a popular destination for visitors (and a great place to warm up). Poinsettias in assorted hues are arranged in creative displays with seasonal ornaments and miles of lights strung in the trees and from every rafter. Other exotics to



view in their finest array include: schlumbergeras, calliandras, brugmansias, pachystachys and justicias.

Featured Flora

To find the Featured Flora in the Public Greenhouse, turn to the Species Locator Map on pages 9 and 10, search by plant number on the map.



1
Curiosity Plant - *Cereus peruvianus*
'Monstrosus'

- Originates from eastern South America
- A cultivated variety that grows in a distorted form
- Instead of one center of growth at the top of the stem, this plant has numerous growing points, causing it to become covered with irregular, knob-like structures

Desert Rose - *Adenium obesum*

- Native to East Africa
- A succulent member of the oleander family
- A main feature is the caudex, or bulbous stem that stores water for the dry season
- Produces pink funnel-shaped flowers in the spring and fall



Bottle Plant - *Jatropha podagrica*

- Native to the West Indies, Central America and Columbia
- Resembles a miniature tree with swollen, bottle-like trunk topped with a few large fig-like leaves
- The Latin name "podagrica" means "with swollen foot". This structure enables the plant to survive droughts
- Butterfly nectar plant



4
Pencil Tree - *Euphorbia tirucalli*

- Native to Madagascar
- A spineless succulent that can grow up to 30 feet
- Like most members of the euphorbia family, this plant contains toxic, milky sap that bleeds when wounded
- Related to the poinsettia

Peperomias - *Peperomia spp.*

- Native to the tropical and sub-tropical rain forests of Central and South America
- Related to the pepper spice plant, almost completely resistant to disease and pests
- Grow as forest floor shrubs or as vines trailing from trees
- Foliage can be solid green, variegated or reddish in color, producing long, slender spikes with tiny flowers



5
Cardinal's Guard - *Pachystachys spicata*

- Native to West Indies and northern South America
- A member of the acanthus family
- A herbaceous shrub with elliptic, textured leaves and scarlet flowers in dense terminal heads



6
Golden Candles - *Pachystachys lutea*

- Native to the mountain forests of Mexico, south to Peru
- Member of the acanthus family
- White flowers emerge from long-lasting yellow bracts
- Once a very popular Victorian Era house plant that is now being rediscovered

Brazilian Plume Flower - *Justicia carnea*

- Native to Brazil
- A large shrub with bright pink flowers set against dark green foliage
- Blooms from spring to winter



Featured Flora

To find the Featured Flora in the Public Greenhouse, turn to the Species Locator Map on pages 9 and 10, search by plant number on the map.

Variegated China Rose - *Hibiscus rosa-sinensis* 'Snow Queen'

- Native to Southeast Asia
- Almost always in bloom except after a hard pruning
- A butterfly nectar plant



Japanese Lantern - *Hibiscus schizopetalus*

- One of the more unusual members of the hibiscus family, native to east Africa
- Almost always in bloom, look for flowers near the peak of the greenhouse
- The orange-red pendulous flowers have petals that are deeply cut and curled upward
- Individual flowers last only one day



Paper Mache Flower - *Bougainvillea spectabilis*

- Native to South America although many are cultivated hybrids
- Member of the four-o'clock family
- Grows into a large vining shrub in the tropics
- Leaf-like colored bracts glow in shades of purple to dark pink, salmon, orange or white

Pineapple Guava - *Acca sellowiana*

- Native to southern Brazil, Uruguay, Paraguay and northern Argentina
- The edible fruit makes a good jelly
- The succulent flowers have dark red stamens, and white and purple recurved petals



Swiss Cheese Plant - *Monstera deliciosa*

- Native to the tropics of South America
- Member of the arum family
- A large, epiphytic climber
- The edible fruit is grown commercially

Bleeding Heart Vine - *Clerodendron thomsonae*

- Native to tropical West Africa
- Fiery crimson flowers surrounded by an inflated snow-white calyx, that later fades to pink
- Four other species of Clerodendrons are planted throughout the greenhouse and one hardy species is located outside the west entrance



Clock Vine - *Thunbergia mysorensis*

- Native to the warm climates of central and southern Africa, Madagascar, and India
- Member of the acanthus family
- Blooms February through October

Chestnut Vine / Tarzan Vine - *Tetragium voinierianum*

- Native to tropical Asia and subtropics
- A course, stout, rampant vine of the grape family
- Host plant of the parasitic rafflesia plant, the world's largest flower



Featured Flora

To find the Featured Flora in the Public Greenhouse, turn to the Species Locator Map on pages 9 and 10, search by plant number on the map.



Queen Sago - *Cycas circinallis*

- Native to Southeast Asia to Australia
- All members of the cycad family are extremely threatened in their native habitats
- Sometimes referred to as “fern-palms” due to its resemblance to tree ferns and palm trees
- Look for different “cones” on separate male and female plants (female on the right)

Angel's Trumpet - *Brugmansia sp.*

- Native to South America
- Member of the potato family
- One of the largest and most fragrant flowers in the world
- Powerfully sweet nighttime fragrance that attracts night-flying pollinators such as moths and bats



Red Powderpuff - *Calliandra haematocephala*

- Native to Bolivia
- Member of the legume family
- A winter-blooming tree that grows to 16 feet
- “Calliandra” means beautiful male flower and “haematocephala” means bloody head
- A large genus of plants with over 150 species worldwide



Shrimp Plant - *Justicia brandegeana*

- Native to Mexico
- Coppery-bronze to pale-pink, bracts along the arching flower head resemble a prawn or shrimp
- A small evergreen shrub always in bloom

Golden Zebra - *Sanchezia speciosa*

- Native to Peru and Ecuador
- Member of the acanthus family
- A 5 foot shrub with variegated leaves and colorful flowers



Chenille Plant - *Acalypha hispida*

- Native to tropical regions of India and New Guinea
- Member of the euphorbia family
- Soft red plumes that resemble tassels of chenille
- Always in bloom



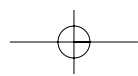
Miniature Powderpuff - *Calliandra emarginata*

- Native to southern Mexico to Panama
- Member of the legume family
- An evergreen shrub that grows to 4 feet
- The apparent flower is actually a cluster of several flowers with prominent stamens



Shrub Verbena - *Lantana camera*

- A deciduous woody perennial from tropical South America
- Clustered flowers come in a variety of colors or mixed
- Entire plant has a spicy aroma
- Butterfly nectar plant
- Can be grown as a shrub, in a hanging basket or trained as a standard tree form



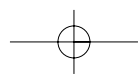
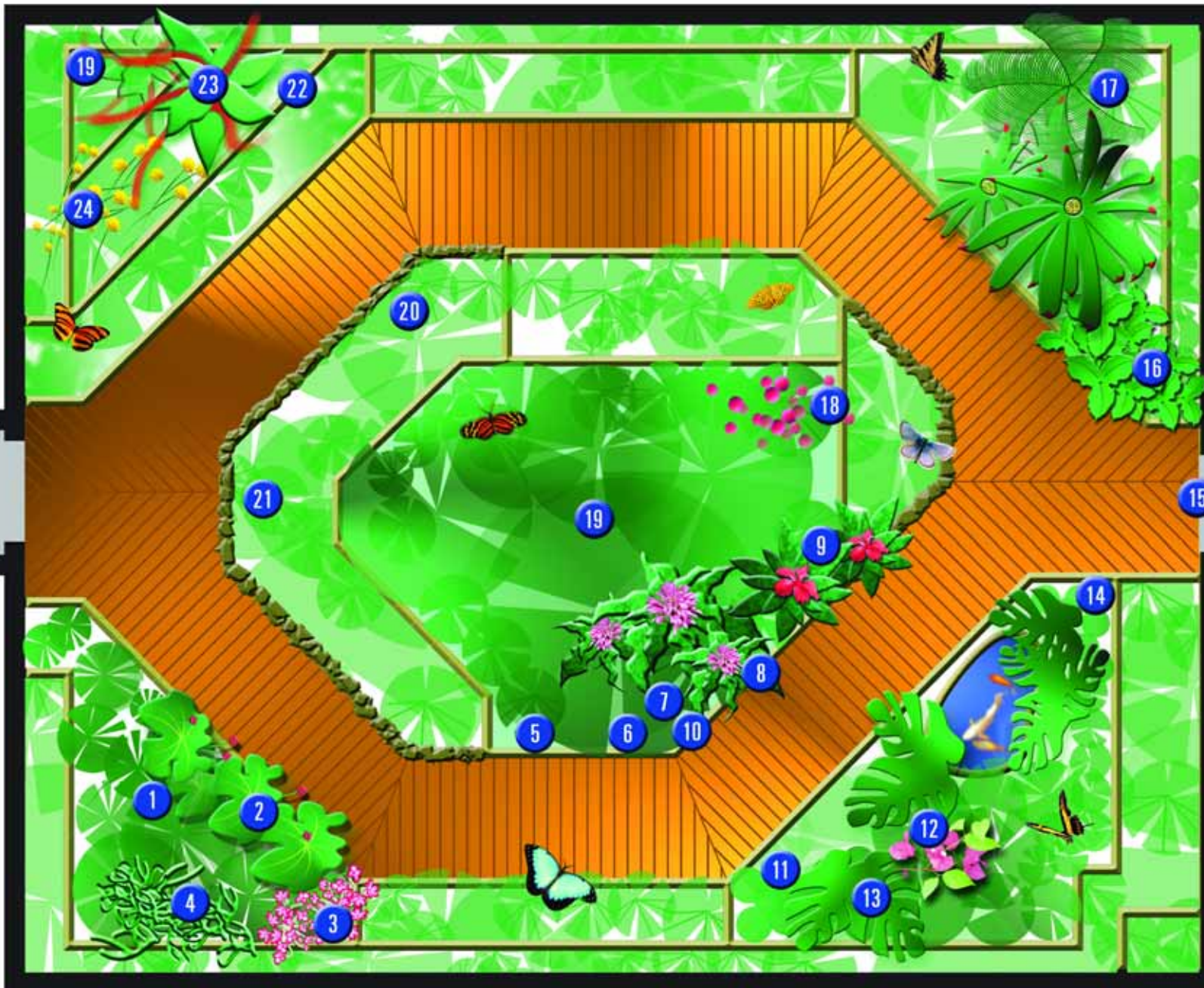
Plant Locator Map

A B C D E F G H I J K L M N O P Q R S T U V W X Y Z

1
2
3
4
5
6
7
8
9
10
11
12
13
14
15
16
17
18
19
20
21

Greenhouse
Entrance

To
Greenhouse
Patio



Complete Species Listing

To find the Featured Flora in the Public Greenhouse, turn to the Species Locator Map on pages 9 and 10, search by plant number on the map.

Botanical Name	Common Name	Location
Abutilon 'Clementine'	Flowering Maple	F-10
Abutilon megapotamicum	Flowering Maple	P-6
Acacia cornigera	Bull-horn Acacia	N-16
Acalypha hispida	Chenille Plant	E-2
Acalypha wilkesiana 'Haleakala'		R-18
Acalypha wilkesiana 'Macafeeana'		F-9
Acalypha wilkesiana 'Marginata'		D-5
Acalypha godseffiana 'Heterophylla'		I-20
Acca sellowiana	Pineapple Guava	R-19
Adenia perrii		H-19
Adenium obesum	Desert Rose	G-20
Adiantum caudatum	Trailing Maidenhair Fern	W-14
Aechmea fasciata	Silver Vase	T-4
Aechmea fulgens discolor		U-3
Aechmea pinnelliana		U-3
Agave americana	Century Plant	F-19
Agave americana 'Variegata'	Variegated Century Plant	C-15
Agave angustissima		D-17
Agave attenuata	Dragon Tree Agave	E-19
Agave endlichiana		B-16
Agave parrasana		D-15
Aglaomorpha meyeniana	Bear's Paw Fern	T-4
Aglaonema commutatum 'Silver King'	Chinese Evergreen	C-6
Aglaonema commutatum 'Silver Queen'		F-4
Allamanda blanchetii	Purple Allamanda	I-20
Allamanda cathartica 'Williamsii'	Golden Trumpet	H-20
Alluaudia ascendens	Songo Be	H-19
Alluaudia procera	African Ocotillo	E-19
Alocasia x amazonica	African Mask	T-15
Aloe bakeri		G-19
Aloe brevisfolia	Crocodile Jaws	B-15
Aloe vera	Medicine Aloe	B-17
Alpinia zerumbet	Shell Ginger	B-3
Alpinia zerumbet 'Variegata'	Variegated Shell Ginger	S-9
Alstophila australis	Australian Tree Fern	H-9
Amomum cardamomum	Cardamon	P-9
Angelonia angustifolia		A-9
Anthurium andraeanum	Flamingo Lily	T-19
Anthurium acherzerianum	Flamingo Flower	X-19
Anthurium 'Red Hot'	Hybrid Flamingo Flower	X-14
Asparagus densiflorus 'Myers'	Plume Asparagus	Q-14
Asparagus densiflorus 'Sprengeri'	Sprengeri Fern	S-19
Asparagus setaceus	Fern Asparagus	O-7
Aspidistra elatior	Cast Iron Plant	K-14
Asplenium nidus	Bird's Nest Fern	S-18
Barleria micans		G-14
Begonia coccinea	Angel Wing Begonia	HB
Begonia x erythrophylla	Beefsteak Begonia	G-1
Begonia solananthera	Brazilian Heart	HB
Begonia 'Bowkit'		H-15
Begonia 'Interlaken'		HB
Blechnum gibbum	Dwarf Tree Fern	V-4
Bougainvillea spectabilis	Paper mache Flower	T-19
Bougainvillea 'Blueberry Ice'		R-1
Bougainvillea 'Raspberry Ice'		P-1
Brassocattleya 'Daffodil'		I-1
Brugmansia suaveolens	Angel's Trumpet	L-11
Brugmansia 'Jamaican Yellow'	Angel's Trumpet	C-2
Brugmansia versicolor	Angel's Trumpet	B-3
Calathea crocata		F-4
Calathea picturata 'Wendlinger'		R14
Calathea zebrina	Zebra Plant	H-9
Calliandra emarginata	Miniature Powderpuff	G-2
Calliandra haematocephala	Red Powderpuff Tree	O-9
Calliandra surinamensis	Pink Powderpuff	E-2
Callistemon viminalis	Weeping Bottlebrush	G-11

Botanical Name	Common Name	Location
Carissa macrocarpa	Natal Plum	V-16
Cautleya lutea	Yellow-back Ginger	N-7
Ceratozamia mexicana	Mexican Horncone	U-4
Cereus hexagonus		B-17
Cereus peruvianus 'Monstrosus'	Curiosity Plant	D-17
Chamaecereus sylvestri	Peanut Cactus	E-16
Chlorophytum comosum 'Stenbergianum'	Spider Plant	U-19
Chrysalidocarpus lutescens	Areca Palm	Y-2
Cissus sicyoides	Curtain Vine	H-21
Citrus limon 'Ponderosa'	Ponderosa Lemon	H-16
Cleistocactus strausii	Silver Torch	B-17
Clerodendrum minahassae		G-13
Clerodendrum quadriloculare	Fireworks	R-6
Clerodendrum x speciosum	Pagoda Flower	K-2
Clerodendrum thomsonae	Bleeding Heart Vine	X-14
Clerodendrum myriocoides	Blue Butterfly Shrub	X-13
Clivia miniata	Kaffir Lily	S-12
Codiaeum variegatum pictum 'Punctatum Aureum'	Croton	B-8
Codiaeum variegatum pictum	Croton	G-10
Coffea arabica	Coffee Plant	C-6
Cordyline terminalis 'Black Beauty'	Hawaiian Ti Plant	S-17
Cordyline terminalis 'Tricolor'	Goodluck Plant	G-11
Costus igneus	Spiral Ginger	G-8
Crassula argentea	Jade Tree	B-18
Crassula argentea 'Silver Dollar'		B-16
Crassula portulaca convoluta 'Gollum'	Trumpet Jade	F-19
Crassula streyi		D-19
Crassula x 'Tom Thumb'	Hybrid Jade	F-18
Crossandra infundibuliformis	Firecracker Flower	I-21
Ctenanthe compressa		G-10
Cuphea hyssopifolia	False Heather	C-9
Cycas circinalis (male & female)	Fern Palm	X-3, X-4
Cyperus isocladius	Dwarf Papyrus	U-14
Davallia mariesii	Squirrel's-Foot Fern	T-20
Dichorisandra thyrifolia	Blue Ginger	P-15
Dizygotheca elegantissima	False Aralia	N-15
Didierea madagascariensis		F-17
Didierea trollii		E-18
Dracaena marginata 'Tricolor'	Rainbow Dracaena	G-10
Dracaena reflexa	Malaysian Arcanae	C-2
Dracaena surculosa	Gold-Dust Dracaena	T-17
Duranta erecta	Dwarf Skyflower	Q-14
Echeveria 'Afterglow'		F-20
Echinocactus grusonii		E-17
Echinopsis multiplex	Sea Urchin Cactus	E-17
Eranthemum pulchellum	Blue Sage	J-16
Epiphyllum chrysocardium	Rick-Rack	J-14
Esposita lanata	Peruvian Old Man	C-16
Eugenia uniflora	Surinam Cherry	V-13
Euphorbia grandidens		C-16
Euphorbia ingens	Giant Candelabra Tree	D-18
Euphorbia laetea	Candelabra Tree	H-20
Euphorbia mammalis	Comcob Plant	E-19
Euphorbia millii 'Splendens'	Crown Of Thorns	B-16, B-20
Euphorbia tirucalli	Pencil Tree	E-20
Euphorbia trigona	African Milk Tree	F-20
Fatsia japonica	Japanese Fatsia	J-8
Ficus Allii		H-12
Ficus benjamina	Weeping Fig	J-14, L-10, R-8,T-3
Ficus benjamina 'Variegata'	Variegated Weeping Fig	M-2
Ficus elastica 'Doescheri'	Indian Rubber Plant	K-16
Ficus elastica 'Variegata'	Variegated Indian Rubber Plant	S-2
Fittonia verschaffeltii argyrea minor	Mosaic Plant	Q-14
Freyinetia banksii		VY-3
Gastroelia beguinii 'American Beauty'	Hybrid Spotted Beauty	F-19
Haworthia angustifolia		F-18

Complete Species Listing

To find the Featured Flora in the Public Greenhouse, turn to the Species Locator Map on pages 9 and 10, search by plant number on the map.

Botanical Name	Common Name	Location
Haworthia cooperi		G-19
Haworthia cymbiformis		G-19
Haworthia cymbiformis 'Transiens'		G-18
Haworthia reinwardtii		G-20
Haworthia subfasciata		F-20
Hedera helix 'Baby Merion Beauty'	Hybrid English Ivy	Q-18
Hedera helix 'Glacier Improved'	Hybrid English Ivy	T-10
Hedera helix 'Itsy Bitsy'	Hybrid English Ivy	H-19
Hedera helix 'Trident'	Hybrid English Ivy	R-4
Heliconia angusta 'Red Christmas'		H-8
Hibiscus rosa-sinensis 'Snow Queen'	Variegated China Rose Hibiscus	R-12
Hibiscus rosa-sinensis 'Rubra Plena'	Hybrid China Rose Hibiscus	Y-8
Hibiscus rosa-sinensis 'White Wings'	Hybrid China Rose Hibiscus	H-16
Hibiscus schizopetalus	Japanese Lantern	O-15
Hohenbergia stellata		P-14
Hoya australis		X-17
Hoya bella	Miniature Wax Plant	M-16
Hoya bella variegata		T-4
Hoya carnosa	Wax Plant	F-9
Hoya carnosa crispum	Hindu Rope	N-17
Hoya cinnamomifolia		I-8
Hoya imperialis		X-16
Humata tyermannii	Bear-Foot Fern	R-7
Ixora javanica	Jungle Geranium	A-9
Jasminum humile 'Revolutum'	Hybrid Italian Jasmine	K-7
Jasminum nitidum	Windmill Jasmine	A-14
Jatropha integerrima		P-7
Jatropha podagrica	Bottle Plant	F-19
Justicia brandegeana	Shrimp Plant	I-7
Justicia carnea	Brazilian Plume	P-14
Justicia exstensa		P-21
Justicia 'Fruit Cocktail'		O-16
Justicia rizzini		Q-15
Kohleria 'Regent'		F-8
Lantana camera		C-5
Lantana montevidensis	Trailing Lantana	B-14
Lemaireocereus marginatus		C-17
Lemaireocereus pruinosus		C-16
Livistonia chinensis	Chinese Fan Palm	O-14
Ludisia discolor	Golden Lace Orchid	G-14
Mammillaria brauneana		L-17
Mammillaria compressa	Mother Of Thousands	C-18
Mammillaria elongata	Golden Stars	D-18
Mandevilla x amabilis 'Alice du Pont'	Hybrid Mandevilla	A-9
Maranta leuconeura erythroeuera	Red-veined Prayer Plant	G-9
Maranta leuconeura kerchoveana	Prayer Plant	H-8
Monstera deliciosa borsigeana	Swiss Cheese Plant	S-20
Neomerica longifolia	Walking Iris	P-7
Neoregelia concentrica albo marginata		W-4
Neoregelia spectabilis	Fingernail Bromeliad	W-7
Nepenthes x 'Coccinea'	Pitcher Plant	U-16
Nephrolepis exaltata	Boston Fern	K-7
Nephrolepis exaltata 'Fluffy Ruffles'		M-19
Notocactus leninghausii	Golden Ball	C-17
Notocactus magnificus		C-16
Oncidium sphacelatum	Dancing-Lady Orchid	A-7
Opuntia microdasys	Bunny Ears	E-16
Opuntia microdasys albata	Angel Wings	E-16
Opuntia pycnantha	Prickly Pear	B-20
Opuntia rufida	Cinnamon Cactus	E-16
Opuntia subulata	Eve's Pin Cushion	C-19
Oxalis hedysaroides 'Rubra'	Purple Shamrocks	P-7
Pachycereus pecten-aboriginum		C-16
Pachypodium	Madagascar Palm	F-20
Pachystachys lutea	Golden Candles	N-16
Pachystachys spicata	Cardinal's Guard	O-15

Botanical Name	Common Name	Location
Pentas lanceolata	Star Clusters	F-11
Peperomia caperata	Rat-Tail	L-16
Peperomia caperata 'Emerald Ripple'		L-16
Peperomia clusiaefolia 'Variegata'		L-16
Peperomia griseo-argentea	Ivy Peperomia	L-16
Peperomia marmorata	Silver Heart Peperomia	L-16
Peperomia obtusifolia	Baby Rubber Plant	L-16
Peperomia obtusifolia 'Gold Tip'		L-16
Peperomia sandersii	Watermelon Peperomia	L-16
Peperomia sarcophylla		L-16
Pereskia aculeata 'Godseffiana'	Barbados Gooseberry	B-15
Petrea volubilis	Queen's Wreath	S-8
Phanerophbia falcata	Holly Fern	S-3
Philodendron bipinnatifidum	Tree Philodendron	M-15
Philodendron x mandaianum		Q-8
Philodendron melinonii	Red Birdsnest	H-15
Phoenix reclinata	Senegal Date Palm	X-20
Pittosporum tobira	Australian Laurel	U-19
Pittosporum tobira 'Variegata'	Variegated Australian Laurel	G-4
Platyterium bifurcatum	Stag's Horn Fern	V-3
Plectranthus australis 'Variegatus'	Variegated Swedish Ivy	H-20
Plumbago indica	Scarlet Leadwort	O-21
Podocarpus macrophyllus var. maki	Buddhist Pine	I-16
Polypodium aureum	Blue Fern	Y-3
Polyscias balfouriana 'Marginata'	Variegated Balfour Aralia	J-14
Polyscias fruticosa	Parsley Aralia	H-8
Psuederantherum autropurpureum	Purple False-Eranthemum	P-16
Psuederantherum 'Amethyst Stars'		M-21
Ptychosperma elegans	Alexander Palm	P-14
Reinwardtia indica	Yellow Flax	M-3
Rhaphis excelsa	Lady Palm	Q-14
Rhipsalis capilliformis		K-15
Rhipsalis houlettiana	Snowdrop Cactus	L-15
Rutya fruticosa	Monkey Face	J-7
Sanchezia speciosa	Golden Zebra	F-11
Sansevieria cylindrica		D-20
Sansevieria trifasciata	Snake Plant	C-20
Sansevieria trifasciata 'Hahnii'	Birdsnest Sansevieria	F-17
Sansevieria trifasciata laurentia	Variegated Snake Plant	D-20
Schefflera actinophylla		O-10
Schefflera nova		R-12
Sedum burrito	Baby Burro's Tail	F-20
Sedum morganianum	Burro's Tail	G-20
Serrisa foetida 'Flora Plena'	Snow Rose	J-1
Serrisa 'Mt. Fuji'		G-15
Solandra maxima	Golden Trumpet	J-7
Spathiphyllum 'Clevelandii'		L-9, N-9
Spathiphyllum 'Wallisii'		V-13
Stenotaphrum secundatum 'Variegatum'	St. Augustine Grass	R-18
Stepelia gigantea	Carrion Star Flower	E-20
Stephanotis floribunda	Madagascar Jasmine	R-1
Strelitzia reginae	Bird Of Paradise	G-8
Strophanthus preussii		R-10
Syngonium podophyllum	Arrowhead Vine	R-7
Tabernaemontana divaricata	Cape-Gardenia	O-11
Tecomaria capensis	Orange Cape-Honeysuckle	R-8
Tetrastigma voinierianum	Chestnut Vine	Y-8
Thunbergia erecta	King's Mantle	Q-14
Thunbergia grandiflora	Blue Trumpet Vine	A-11
Thunbergia mysorensis	Clock Vine	Z-11
Tillandsia cyanea	Pink Quill	R-7
Trevesia palmata	Snowflake Palm	C-7
Xanthosoma linenii		Q-14
Yucca aloifolia	Spanish Bayonet	C-19
Yucca elephantipes	Spineless Yucca	H-16
Zebrina pendula discolor		A-9